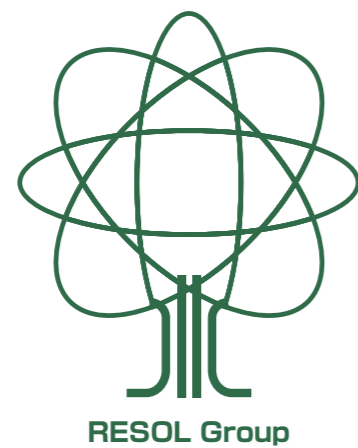


**Bringing more smiles to you
on your time off.**

We contribute to a bright society by providing support
for a life worth living, bonds, health promotion,
and relaxation through innovative ideas and initiatives.



Company Overview

| | |
|---------------------------------|--|
| Business Name | RESOL HOLDINGS Co., Ltd. |
| Established | February 27, 1931 |
| Capital | JPY 3,948,088,000 |
| Shares | Total number of shares issued 5,564,200 Stock listing Tokyo Stock Exchange, First Section Code No. 5261 |
| Number of Employees | Group employees: 1,587 (as of March 31, 2021) |
| Headquarters | 6-24-1 Nishi-shinjuku, Shinjuku-ku, Tokyo 160-0023 Japan Tel: +81-3-3344-8811 (main number) |
| Main Business Activities | <ul style="list-style-type: none"> Hotel operations business Golf operations business RESOL NO MORI (CCRC) Welfare business Renewable energy business Investment recovery business |

Main Group Companies

RESOL Co., Ltd.
RESOL NO MORI Co., Ltd.
RESOL LIFE SUPPORT Co., Ltd.
RESOL RENEWABLE ENERGY Co., Ltd.
RESOL GENERAL RESEARCH INSTITUTE Co., Ltd.

*For other RESOL Group companies, please refer to our annual securities report.

| Major Shareholders | Shareholder | Shares held | Percentage held, excluding treasury stocks |
|--------------------|--|-------------|--|
| | Mitsui Fudosan Co., Ltd. | 2,279,200 | 41.03% |
| | Konami Holdings Corporation | 1,132,900 | 20.39 |
| | The Master Trust Bank of Japan, Ltd. (retirement benefits trust account/ Misawa Homes account) | 342,000 | 6.15 |
| | Resol Group client stock ownership | 100,500 | 1.80 |
| | The Master Trust Bank of Japan, Ltd. (trust account) | 61,900 | 1.11 |
| | Custody Bank of Japan, Ltd. (trust account 4) | 57,300 | 1.03 |
| | Custody Bank of Japan, Ltd. (trust account 5) | 30,300 | 0.54 |
| | Custody Bank of Japan, Ltd. (trust account 6) | 28,200 | 0.50 |
| | Custody Bank of Japan, Ltd. (trust account 1) | 25,100 | 0.45 |
| | JPMorgan Securities Japan Co., Ltd. | 20,220 | 0.36 |

*The percentage of stock held excludes treasury stocks (9,910 shares).

(as of March 31, 2021)

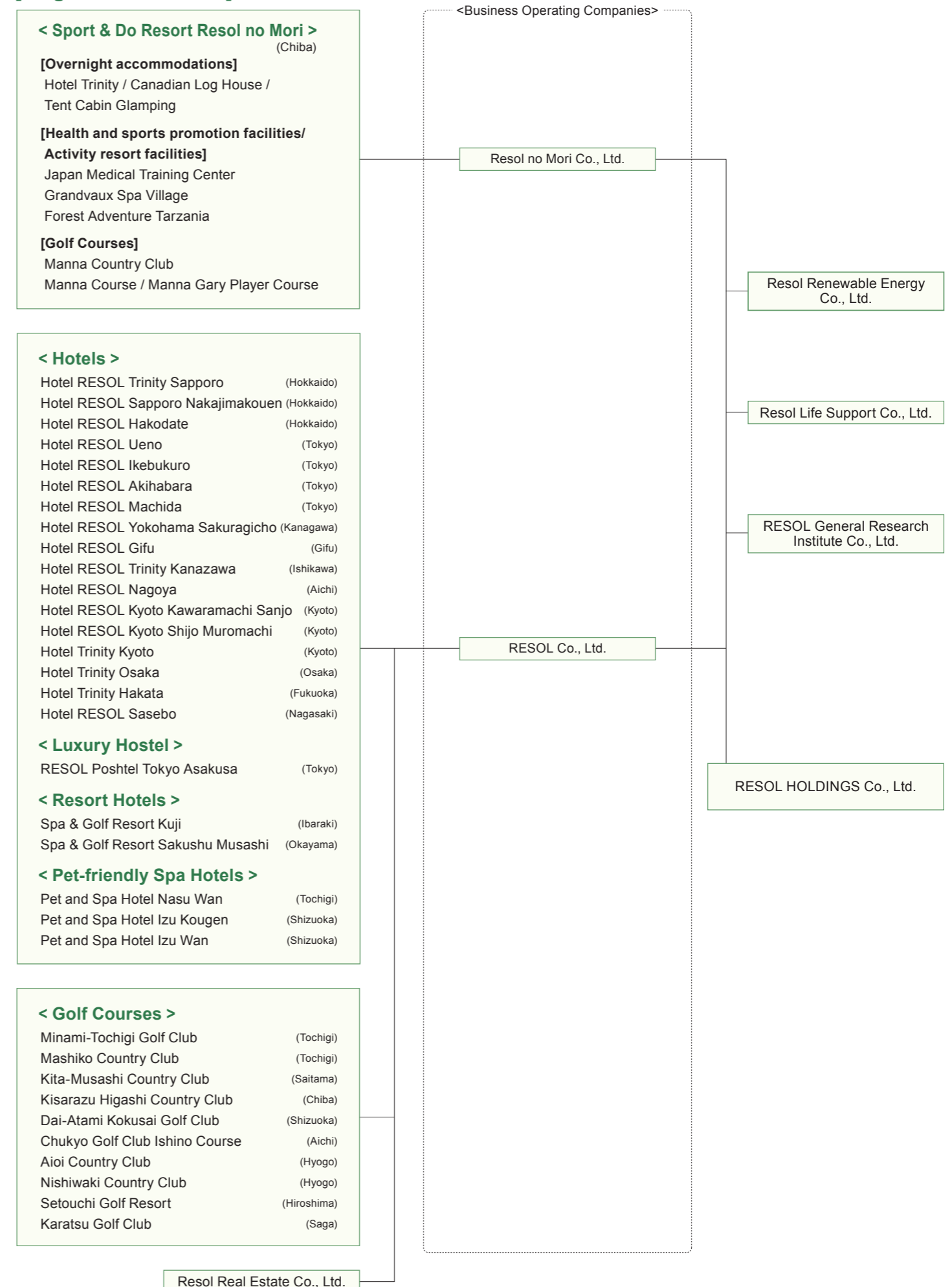
| Acquired Licenses | License | Issuing Authority |
|---------------------------------|--|----------------------|
| Construction Business Permit | Governor of Tokyo License (General-30) No. 149214 | Governor of Tokyo |
| Real Estate Transaction License | Governor of Tokyo (1) No. 100051 | Governor of Tokyo |
| Travel Business Registration | Japan Tourism Agency Commissioner Registration, Travel Business No. 1177 | Japan Tourism Agency |

Organization (Directors, Auditors, Executive Officers)

| | |
|--|---|
| Representative Director, Chairman Hideaki Hirata | Responsible for overall Group management Chairman of the Board of Directors Chairman of the Group Management Liaison Committee In charge of the Internal Audit Office In charge of Resol no Mori Co., Ltd. |
| Representative Director, President Yoshichika Imaizumi | Responsible for overall operating business President of Resol Co., Ltd. President of Resol Real Estate Co., Ltd. |
| Managing Director Tadashi Hoshino | Responsible for overall Development, Group public relations and the system Director of Public Relations In charge of the Management System Office In charge of Resol Land Development Co., Ltd. In charge of Resol General Research Institute Co., Ltd. |

| | |
|--|--|
| Director, Executive Officer Masaru Osawa | Responsible for management and administration strategy Manager of the Accounting and Management Administration Departments Director of the Customer Support Office President of Chukyo Golf Club Co., Ltd. President of Resol Life Support Co., Ltd. |
| Outside Director Yutaka Kawamura | |
| Outside Director Kimihiko Higashio | |
| Full-time Auditor Yasuji Kojima | |
| External Auditor Masahiko Okamoto | |
| External Auditor Manabu Mizutani | |
| Group Executive Officers Hiroyuki Miyano | President of RESOL General Research Institute Co., Ltd. |

[Organization Chart]



*As of July 1, 2021, if not specifically stated.