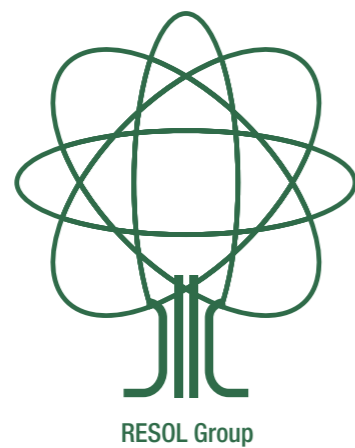


**Bringing more smiles to you
on your time off.**

We contribute to a bright society by providing support
for a life worth living, bonds, health promotion,
and relaxation through innovative ideas and initiatives.



Company Overview

Business Name	RESOL HOLDINGS Co., Ltd.
Established	February 27, 1931
Capital	JPY 3,948,088,000
Shares	Total number of authorized shares: 8,000,000 Total number of issued shares: 5,564,200 Number of shareholders: 10,605 (as of March 31, 2022) Stock listing: Prime Market of Tokyo Stock Exchange, Code No. 5261 (as of April 4, 2022)
Number of Employees	Group employees: 1,524 (as of March 31, 2022)
Headquarters	6-24-1 Nishi-shinjuku, Shinjuku-ku, Tokyo 160-0023 Japan Tel: +81-3-3344-8811 (main number)
Main Business Activities	<ul style="list-style-type: none"> Hotel operations business Golf operations business RESOL NO MORI (CCRC) Welfare business Renewable energy business Investment recovery business

Main Group Companies	RESOL Co., Ltd. RESOL NO MORI Co., Ltd. RESOL LIFE SUPPORT Co., Ltd. RESOL GENERAL RESEARCH INSTITUTE Co., Ltd. RESOL LAND DEVELOPMENT Co., Ltd. RESOL REAL ESTATE Co., Ltd. * For other RESOL Group companies, please refer to our annual securities report.
-----------------------------	---

Organization (Directors, Auditors, Executive Officers)

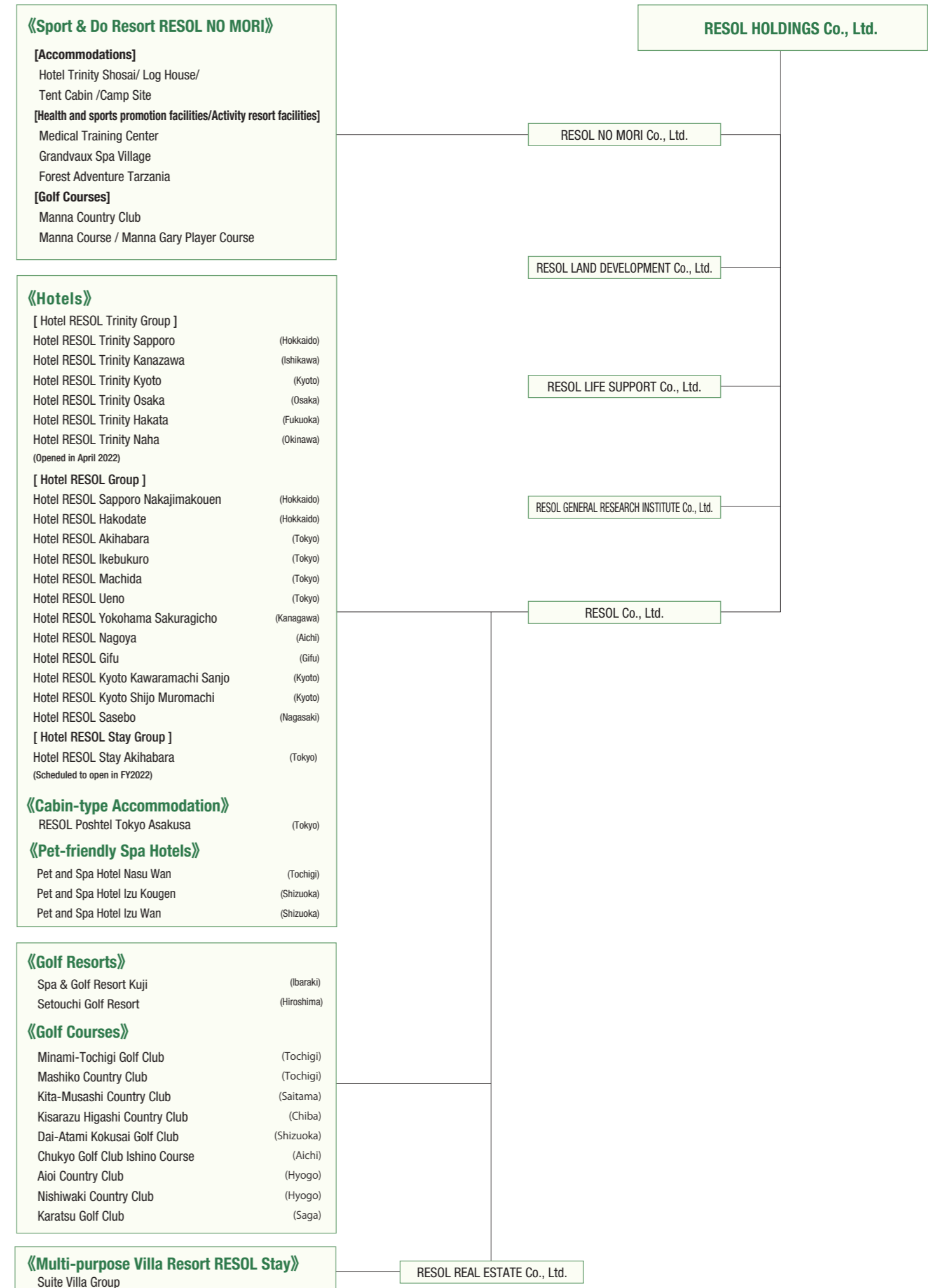
Director, Chairman	Hideaki Hirata Chairman of the Board of Directors Chairman of the Group Management Liaison Committee	Full-time Auditor	Yasuji Kojima
Representative Director, President	Masaru Osawa Responsible for overall Group management Responsible for finance and general affairs President of Chukyo Golf Club Co., Ltd. President of RESOL Life Support Co., Ltd. In charge of the Internal Audit Office	External Auditor	Masahiko Okamoto
Director Managing Executive Officer	Tadashi Hoshino Responsible for Group Public Relations and IR Director of Public Relations	External Auditor	Manabu Mizutani
Director Executive Officer	Hiroyuki Miyano Responsible for overall Development President of RESOL General Research Institute Co., Ltd. In charge of RESOL Land Development Co., Ltd.	Group Senior Executive Officer	Naoto Sano President of RESOL Co., Ltd.
Outside Director	Yutaka Kawamura	Group Executive Officer	Yuki Soya President of RESOL no Mori Co., Ltd.
Outside Director	Kimihiko Higashio	Group Executive Officer	Shigehito Saji President of Dai-Atami Kokusai Golf Co., Ltd. President of Setouchi Golf Resort Co., Ltd. President of Mashiko Golf Properties Co., Ltd. President of Minami-Tochigi Golf Club Co., Ltd. President of Kisarazu Higashi Country Club Co., Ltd. President of Karatsu Golf Club Co., Ltd.
		Group Executive Officer	Hideyuki Tanaka JG Kuji Co., Ltd.

Major Shareholders	Shareholder	Shares held	Percentage held, excluding treasury stocks (%)
	Mitsui Fudosan Co., Ltd.	2,279,200	41.03
	Konami Group Corporation	1,132,900	20.39
	The Master Trust Bank of Japan, Ltd. (retirement benefits trust account/Misawa Homes account)	342,000	6.15
	The Master Trust Bank of Japan, Ltd. (trust account)	168,000	3.02
	RESOL Group client stock ownership	91,800	1.65
	Custody Bank of Japan, Ltd. (trust account 4)	57,200	1.02
	JPMorgan Securities Japan Co., Ltd.	26,920	0.48
	Custody Bank of Japan, Ltd. (trust account)	16,300	0.29
	Hideaki Hirata	12,522	0.22
	Motoyama Green Management Co.,Ltd	11,000	0.19

* The percentage of stock held excludes treasury stocks (9,372 shares).
(as of March 31, 2022)

Acquired Licenses	Construction Business Permit: Governor of Tokyo License (General-30) No. 149214
	Real Estate Transaction License: Governor of Tokyo (2) No. 100051
	Travel Business Registration: Japan Tourism Agency Commissioner Registration, Travel Business No. 1177

[Organization Chart]



* As of June 29, 2022, if not specifically stated.