

RESOL Group Facilities

Accommodations

Hotel RESOL Trinity Group

Hokkaido: Hotel RESOL Trinity Sapporo
Ishikawa: Hotel RESOL Trinity Kanazawa
Kyoto: Hotel RESOL Trinity Kyoto
Osaka: Hotel RESOL Trinity Osaka
Fukuoka: Hotel RESOL Trinity Hakata
Okinawa: Hotel RESOL Trinity Naha

Hotel RESOL Group

Hokkaido: Hotel RESOL Sapporo Nakajimakouen
Hotel RESOL Hakodate
Tokyo: Hotel RESOL Akihabara
Hotel RESOL Ikebukuro
Hotel RESOL Machida
Hotel RESOL Ueno
Kanagawa: Hotel RESOL Yokohama Sakuragicho
Aichi: Hotel RESOL Nagoya
Gifu: Hotel RESOL Gifu
Kyoto: Hotel RESOL Kyoto Kawaramachi Sanjo
Hotel RESOL Kyoto Shijo Muromachi
Nagasaki: Hotel RESOL Sasebo

Hotel RESOL Stay Group

Tokyo: Hotel RESOL Stay Akihabara

Cabin-type Accommodation

Tokyo: RESOL Poshtel Tokyo Asakusa

Resort-type Facilities

[Experience-based Resorts]

Chiba: Sport & Do Resort RESOL NO MORI

[Golf Resorts]

Ibaraki: Spa & Golf Resort Kuji

Hiroshima: Setouchi Golf Resort

Pet and Spa Hotels (Pet-friendly Hotels)

Tochigi: Pet and Spa Hotel Nasu Wan

Shizuoka: Pet and Spa Hotel Izu Kogen

Pet and Spa Hotel Izu Wan

Suite Villas *RESOL Stay business

We are expanding our offering of more than 60 Suite Villas in major resort areas around the Kanto region.

Areas of Business Expansion



Spa & Golf Resort Kuji



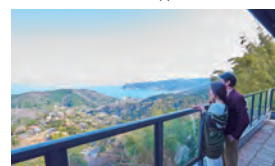
Setouchi Golf Resort



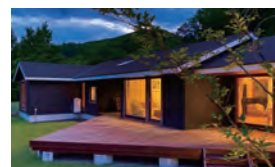
Suite Villa Yamanakako Finland Log



Suite Villa Izu Ipeki Lake



Suite Villa Ocean View Atami Shizengo



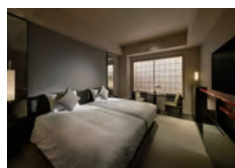
Karuizawa 72 Golf Course Side Villa



Hotel RESOL Stay Akihabara



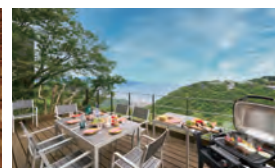
Hotel RESOL Trinity Naha



Hotel RESOL Trinity Kyoto



Suite Villa Nasu Kogen Finland Log



Suite Villa Ocean View Minami Atami

Golf Courses

Golf Courses

Ibaraki: Spa & Golf Resort Kuji
Tochigi: Minami-Tochigi Golf Club
Mashiko Country Club
Saitama: Kita-Musashi Country Club
Iruma Country Club
Chiba: Manna Country Club Manna Course
/Manna Gary Player Course
Kisarazu Higashi Country Club
Shizuoka: Dai-Atami Kokusai Golf Club
Nagano: Mochizuki RESOL Golf Club

Aichi: Chukyo Golf Club Ishino Course
Wakayama: Arida RESOL Golf Club
Kyoto: Kansai Country Club
Hyogo: Miki Yokawa Country Club
Hiroshima: Setouchi Golf Resort
Saga: Karatsu Golf Club

Managed partnership golf courses

Yamanashi: Ohtsuki Country Club
Hyogo: Nishiwaki Country Club



Dai-Atami Kokusai Golf Club



Setouchi Golf Resort

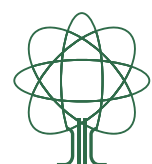
RESOL Group Business Guide



RESOL
RESOL Group

Bringing more smiles to you
on your time off.

We contribute to a bright society by
providing support for a life worth living,
bonds, health promotion, and relaxation
through innovative ideas and initiatives.



RESOL HOLDINGS Co., Ltd.

Nishi-Shinjuku Mitsui Building 12F,
6-24-1 Nishi-shinjuku, Shinjuku-ku, Tokyo 160-0023 Japan
Tel: +81-3-3344-8811 (main number) Fax: +81-3-3344-5052



RESOL HOLDINGS Co., Ltd.

Bringing more smiles to you on your time off.

The RESOL Group is developing a diversified business in facility management, investment and regeneration, leveraging synergies among its various businesses. Our aim is to provide services that will delight our customers and bring smiles to many faces.

[Origin of RESOL] The company's founding motto includes "Wisdom and ingenuity are our assets" and "We will not give up; we will be a company that is sensitive to change."
The name "RESOL," a combination of the words "Resort" and "Solution," derives from the company's previous trading name, "Resort Solution."



Aerial view of RESOL NO MORI



Glamping Area (Lac Leman), a poolside tent cabin site



RESOL NO MORI (CCRC)

We specialize in facility management and real estate development, focusing on experience-based resorts like Sport & Do Resort RESOL NO MORI.

Main operating company: RESOL NO MORI Co., Ltd.

- Real estate development business that leverages the natural environment and strengths of RESOL NO MORI.
- Sport & Do Resort RESOL NO MORI, an experience-based resort on the themes of resort, health, sport, and outdoor activities.
- Accommodations
 - Hotels, log house facilities, glamping area Grandvaux Spa Village (with tent cabins and hot bath facilities), and auto camping sites
- Forest Adventure Tarzania
 - Training facility
- Medical Training Center, a full-scale sports facility with athlete specifications
- Mana Country Club, a prestigious golf course
 - Mana Course (with 27 holes) and Mana Gary Player Course (with 18 holes)
- Sale of golf and resort memberships for Golf Vacation Club RESOL NO MORI.



Glamping Villa



Glamping Area (Lac Leman)



Tent Cabins Premium



Hotel operations business

The Hotel RESOL brand is expanding to 20 locations throughout Japan.

Main operating company: RESOL Co., Ltd.

- Hotel Concept: "Hotels with a Story" — Each Hotel RESOL uniquely integrates into its local community, having its own identity and narrative.
- Design: Our design ethos is rooted in local culture and art, reflecting the community's unique identity.
- Eatwell Breakfast: A healthy and delicious breakfast.
- Relaxation: Original welcoming aroma, shoes off, wide beds (with original low-resilience mattresses), bathtubs where guests can stretch their legs, rooms with greenery, and a living lobby spa.
- We will continue to transition from a lodging-focused hotel to a tourist hotel, offering services tailored to our customers' needs and enhancing the quality of these services.
- In addition to the HOTEL RESOL chain, we have three pet-friendly spa hotels in resorts where guests and their dogs can enjoy themselves together (one in Nasu and two in Izu Kogen).



Hotel RESOL Trinity Osaka



RESOL Stay business

We symbolize the era of minimal ownership through our stay-type Suite Villas.

We are expanding our shared villa usage business, offering a range of stay options from weekend getaways to long-term residencies.

Main operating company: RESOL Real Estate Co., Ltd.

- We have coined the term "RESOL Stay" to describe a travel style where guests can enjoy the comforts of living rather than just staying and designed "Suite Villas" as the ideal spaces for such transformative experiences.
- We are actively increasing our property portfolio and fortifying partnerships with villa owners, primarily focusing on the Kanto region.
- Choose from three distinct stay styles depending on your preferences and length of stay.
 - Indulge in a relaxed five-night "Weekly Stay."
 - Experience elegant living in our villas with a "Monthly Stay" option starting from 30 days.
 - Our "Daily Stay" option is available for spontaneous trips, with bookings starting from just one night.



Suite Villa Ocean View Minami-Atami



Chukyo Golf Club Ishino Course



Golf operations business

We operate 18 courses nationwide with a management style that fits the characteristics of each golf course.

Main operating company: RESOL Co., Ltd.

- We respond to customer needs with a management style corresponding to each golf course's characteristics and situations.
- We operate 18 golf courses across Japan, including two in partnership with external management.
 - <Ibaraki, Tochigi, Saitama, Chiba, Shizuoka, Yamanashi, Nagano, Aichi, Wakayama, Kyoto, Hyogo, Hiroshima, and Saga>
- We provide a wide range of expertise in golf course management, consulting, and related services.
- We also offer a wide range of services for non-golf uses, such as camping, and various banquets.
- We host women's professional tournaments and Junior Golf World Cups at the Chukyo Golf Club Ishino Course.



Iruma Country Club



Fairway Front Villa business

We are developing and offering Fairway Front Villas, featuring spacious interiors, suite-like amenities, and magnificent course-integrated terraces.

Main operating companies: [Development] RESOL General Research Institute Co., Ltd. / [Operation] RESOL Co., Ltd.

- A new business that combines proprietary know-how from our villa operations (developed and operated by RESOL) is being launched at the Spa & Golf Resort Kuji and Setouchi Golf Resort.
- Our villas provide stunning views, a private setting, and unparalleled openness.
- Also sold as Golf Vacation Club, a membership-based resort club.
- Future expansion planned at group courses.



Setouchi Golf Resort



Spa & Golf Resort Kuji



Welfare business

In our welfare business, we support the creation of health and happiness from both physical and mental aspects through our welfare service, Life Support Club.

Main operating company: RESOL Life Support Co., Ltd.

- We support corporate health management through our comprehensive welfare agency service, Life Support Club.
- Our key strengths are our unique payment system, directly managed facilities, and the "Plus Your Choice" feature.
- We aim to expand our well-being menu and offer an experience of improved convenience for our members.
- We expand member services through our strengthened collaboration with the directly managed facilities leveraging group synergies.



Renewable energy business

We develop solar power generation facilities on the land and buildings of our group golf courses, with the aim to expand in two business areas: selling electricity and promoting local production and consumption.

Main operating companies: RESOL General Research Institute Co., Ltd.

- We continue to promote CO2 reduction while advancing efforts to address decarbonization needs and practice being an earth-friendly corporate group.
- Solar carport business
 - We construct carports with solar power generation facilities in parking lots like golf courses.
 - We promote the business by utilizing electric vehicle (EV) charging batteries, which are expected to become more widespread in the future, as a source of emergency power during disasters and for self-consumption at the facilities.
- We are committed to sustainability through the development of new solar power generation facilities.



Investment recovery business

Our solutions business leverages proprietary know-how to optimize facility utilization.

Main operating companies: RESOL HOLDINGS Co., Ltd. / RESOL General Research Institute Co., Ltd.

- Promoting investment recovery business to add value to the operation of facilities, such as hotels, golf courses, and resorts.
- We achieve resort-style recovery through villa construction at golf courses.
- We partially convert existing golf courses and new acquisitions into uses for renewable energy and create new businesses aimed to fulfill decarbonization needs.

