



Company Overview

RESOL HOLDINGS Co., Ltd.

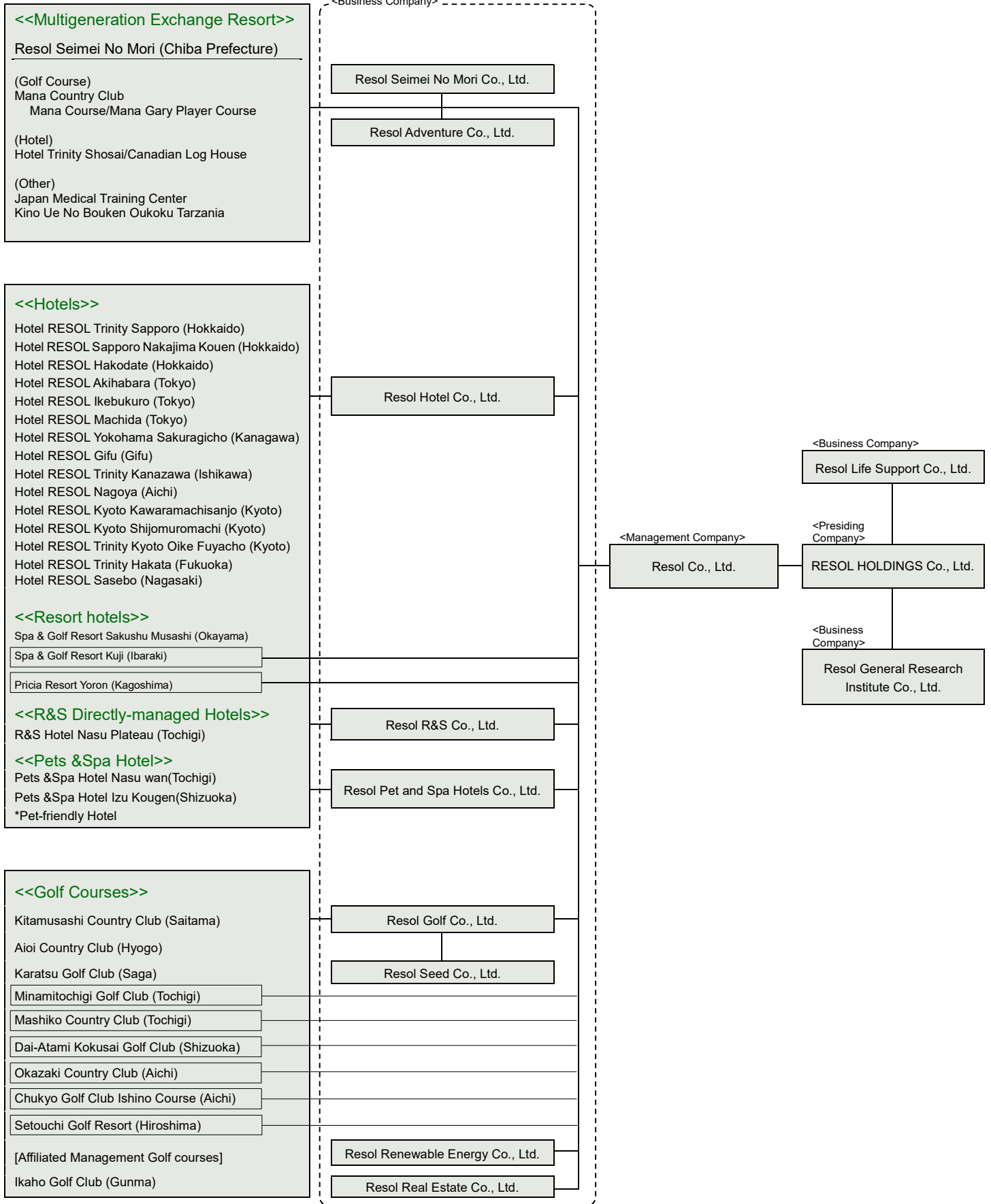
Business name	RESOL HOLDINGS Co., Ltd.	Major Shareholders	Name of shareholder	No. of shares held	Investment ratio excluding treasury stocks
Established	February 27, 1931				
Capital	JPY 3,948,088,000		Mitsui Fudosan Co., Ltd.	2,279,200	41.03%
Shares	Total number of shares issued 5,564,200 Stock listing Tokyo Stock Exchange First Section Code No. 5261		Konami Holdings Corporation The Master Trust Bank of Japan, Ltd. (Retirement Benefits Trust Account/Misawa Home Account).	1,132,900	20.39
Number of Employees	Group employees 1,519 (as of Mar. 31, 2019)		Resol Group Share Ownership Plan	101,000	1.81
Headquarters	6-24-1 Nishi-shinjuku, Shinjuku-ku, Tokyo 160-0023 Japan Tel: +81-3-3344-8811 (Main number)		Japan Trustee Services Bank Ltd. (trust account 4) The Master Trust Bank of Japan, Ltd. (trust Account)	56,300 52,500	1.01 0.94
Main Business Activities	<ul style="list-style-type: none"> ● Hotel operation business ● Golf operation business ● CCRC Business ● Welfare business ● Renewable energy business ● Real estate-related business and investment recovery business 		Japan Trustee Services Bank Ltd. (trust account 5) Japan Trustee Services Bank Ltd. (trust account) Japan Trustee Services Bank Ltd. (trust account 1) Japan Trustee Services Bank Ltd. (trust account 2)	39,900 35,500 26,100 22,100	0.71 0.63 0.46 0.39
Main Group Companies	RESOL HOTEL Co., Ltd. RESOL GOLF Co., Ltd. RESOL SEIMEI NO MORI Co., Ltd. RESOL LIFE SUPPORT Co., Ltd. RESOL RENEWABLE ENERGY Co., Ltd. RESOL SEED Co., Ltd. RESOL R&S Co., Ltd. RESOL PET AND SPA HOTELS Co., Ltd. RESOL Co., Ltd.	Acquired Licenses	Construction Business Permit Real-Estate Transaction License Travel Business Registration	Construction Business License Governor of Tokyo License (General-30) No. 149214 Governor of Tokyo (1) No. 100051 Japan Tourism Agency Commissioner Registration, Travel Business No. 1177	(as of March 31, 2019)
	*Please check other group companies in our annual securities report				

Organization (Director, Auditor, Executive Officer)

Chairman (CEO) Chairman, Executive Officer	Hideaki Hirata	[Overall group management strategy] Group chief executive officer, who manages: Project Planning Department Internal Audit Office Resol Seimei No Mori Co., Ltd., Resol Renewable Energy Co., Ltd Resol General Research Institute Co., Ltd.
President (COO) President, Executive Officer	Yoshichika Imaizumi	[Overall operating business strategy] Group Chief operating officer, who manages the following: Resol Co., Ltd.; Resol Hotel Co., Ltd.; Resol R&S Co., Ltd.; Resol Pet and Spa Hotels Co., Ltd.; Resol Golf Co., Ltd.; Resol Seed Co., Ltd.; Resol Real Estate Co., Ltd.
Managing Director	Tadashi Hoshino	[Group public relations and system strategy] Management System Office PR Department Managing: Resol Life Support Co., Ltd.
Executive Officer	Masaru Osawa	[Management and administration strategy] Administration Department, Management Administration Department Customer Support Office Managing: Chukyo Golf Club Co., Ltd.
Outside Director	Yutaka Kawamura	-
Outside Director	Kimihiko Higashio	-
Full-time auditor	Yasuji Kojima	-
Outside auditor	Masahiko Okamoto	-
Outside auditor	Takeo Murakami	-
Executive Officer	Hiroyuki Miyano	Project Planning Department Manager
Group Senior Executive Officer	Koki Yuda	President of Resol Seimei No Mori Co., Ltd. President of Resol General Research Institute Co., Ltd.

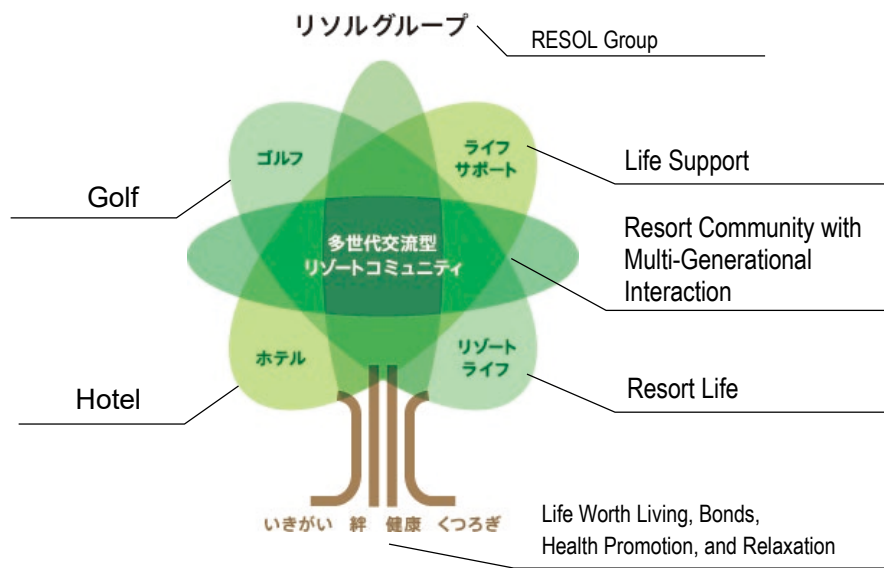
*As of October 1, 2019, if not specifically stated

<<Organization Chart>>



Bringing more smiles to you on your time off.

Our contribution to a bright society is through support for *a life worth living, bonds, health promotion, and relaxation* through innovative ideas and our initiative.



RESOL HOLDINGS Co., Ltd.