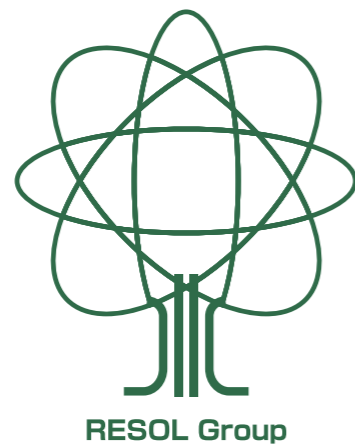


**Bringing more smiles to you
on your time off.**

We contribute to a bright society by providing support
for a life worth living, bonds, health promotion,
and relaxation through innovative ideas and initiatives.



Company Overview

Bringing more smiles to you on your time off.



RESOL HOLDINGS Co., Ltd.

Business Name	RESOL HOLDINGS Co., Ltd.
Established	February 27, 1931
Capital	JPY 3,948,088,000
Shares	Total number of authorized shares: 8,000,000 Total number of issued shares: 5,564,200 Number of shareholders: 16,040 Stock listing: Prime Market of Tokyo Stock Exchange, Code No. 5261 (as of March 31, 2025)
Number of Employees	Group employees: 1,907 (as of March 31, 2025)
Headquarters	6-24-1 Nishi-shinjuku, Shinjuku-ku, Tokyo 160-0023 Japan
Main Business Activities	<ul style="list-style-type: none"> Hotel operations business Golf operations business RESOL NO MORI Welfare business Renewable energy business Investment recovery business

Main Group Companies	RESOL Co., Ltd. RESOL NO MORI Co., Ltd. RESOL LIFE SUPPORT Co., Ltd. RESOL GENERAL RESEARCH INSTITUTE Co., Ltd. RESOL REAL ESTATE Co., Ltd. * For other RESOL Group companies, please refer to our annual securities report.
-----------------------------	---

Organization (Directors, Auditors, Executive Officers)

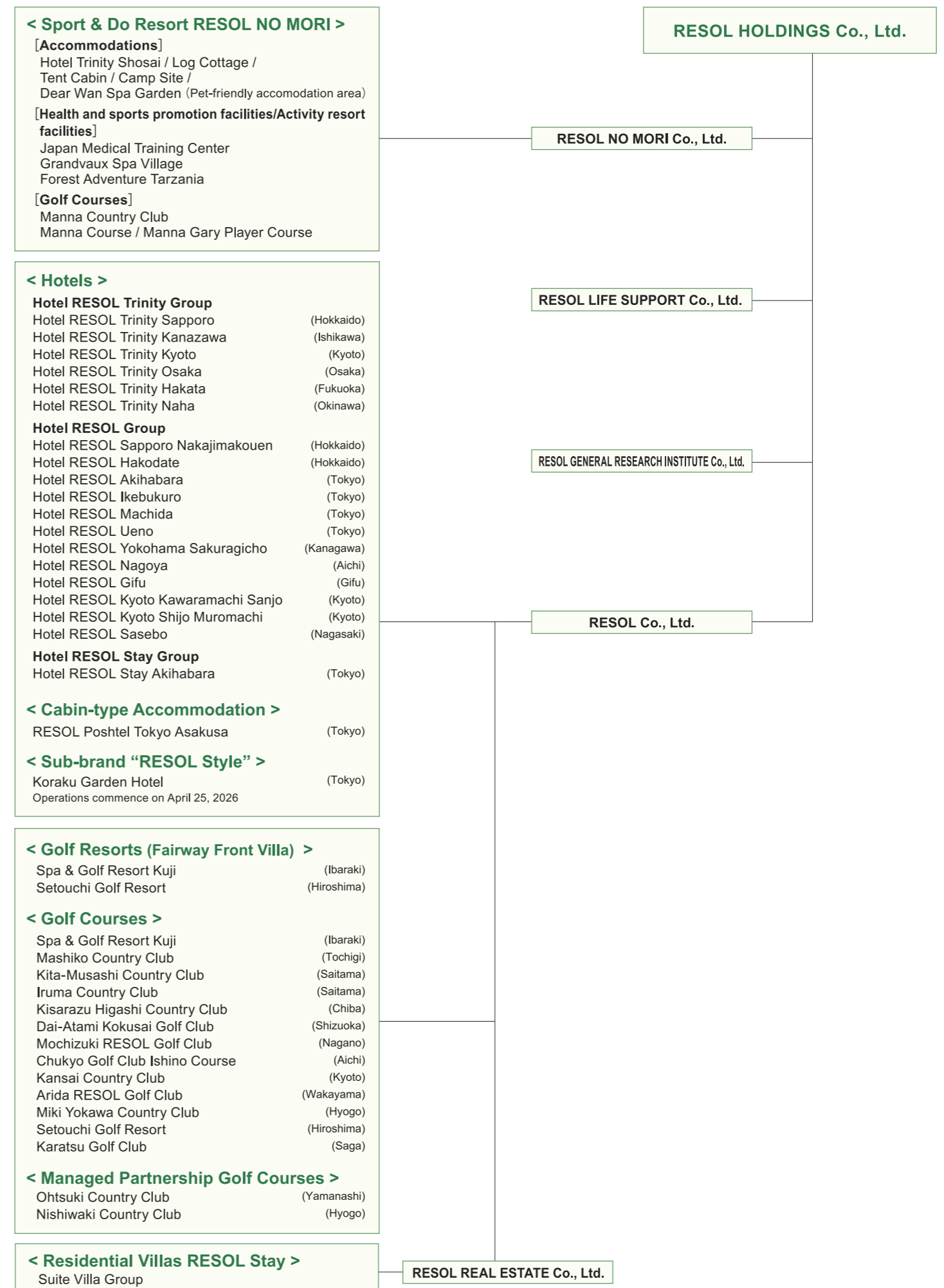
Director, Chairperson and Chairperson, Executive Officer	Hideaki Hirata Chairperson of the Board of Directors	Outside Audit & Supervisory Board Member	Hirofumi Ito
Representative Director, President and President, Executive Officer	Masaru Osawa Responsible for overall Group's management Chairperson of the Group Management Liaison Committee In charge of the Group Public Relations and IR In charge of the Internal Audit	Outside Audit & Supervisory Board Member	Manabu Mizutani
Director / Board of Directors and Executive Officer	Yasuji Kojima In charge of the General Affairs In charge of the Accounting	Executive Officer	Hisashi Kono Director of General Affairs
Director / Board of Directors and Executive Officer	Naoto Sano Responsible for hotel and golf operations business Representative Director, President of RESOL Co., Ltd.	Group Senior Executive Officer	Hiroyuki Miyano Representative Director, President of RESOL General Research Institute Co., Ltd.
Outside Director	Kimihiko Higashio	Group Executive Officer	Tomonori Soya Representative Director, Vice-President of RESOL Co., Ltd. Representative Director, President of JG Kuji Co., Ltd. Representative Director, President of Dai-Atami Kokusai Golf Club Co., Ltd. Representative Director, President of Setouchi Golf Resort Co., Ltd. *The description of the posts held in other Group's companies is omitted.
Outside Director	Makoto Tokuda	Group Executive Officer	Shigehito Saji Representative Director, President of RESOL no Mori Co., Ltd.
Full-time Audit & Supervisory Board Member	Kiyoshi Iwaba	Group Executive Officer	Hideyuki Tanaka Representative Director, President of RESOL Life Support Co., Ltd.
		Group Executive Officer	Ryota Sano Director, General Manager of RESOL no Mori Co., Ltd.

Major Shareholders	Shareholder	Shares held	Percentage held, excluding treasury stocks (%)
	Mitsui Fudosan Co., Ltd.	1,725,100	31.04
	Konami Group Corporation	1,132,900	20.38
	The Master Trust Bank of Japan, Ltd. (retirement benefits trust account/Misawa Homes account)	342,000	6.15
	RESOL Group client stock ownership	87,500	1.57
	SBI SECURITIES Co., Ltd.	50,779	0.91
	Central Tanshi Co., Ltd.	30,000	0.53
	Monex, Inc.	16,877	0.30
	Hideaki Hirata	14,009	0.25
	Rakuten Securities, Inc.	12,301	0.22
	BNYM SA/NY FOR BNYM FOR BNY GCM CLIENT ACCOUNTS M LSCB RD	12,230	0.22

*The percentage of stock held excludes treasury stocks (7,002 shares).
(as of September 30, 2025)

Acquired Licenses Real Estate Transaction License Governor of Tokyo (2) No. 100051

[Organization Chart]



* As of April 1, 2026, if not specifically stated.